



ITALIA YACHT 13.98

The IY 13.98 is a 13.98 m (45 footer) Italian-designed cruiser-racer by Italia Yachts and naval architect Maurizio Cossutti. Launched in 2012, she won the European Yacht of the Year in the Luxury Cruiser category in 2013. Built with a stiff but lightweight hull (sandwich construction using E-glass and carbon reinforcement), it has a T-keel with a bulb for strong righting moment. The displacement is 9,500 kg, and ballast is 3,100 kg. With a draft at 2.60 m, making it relatively deep-keeled.

Our IY13.98 is powered by a 55 HP Yanmar diesel, fully serviced by official Yanmar dealers.

Her sail plan is generous — around 124 m² upwind, and up to ~226 m² with gennaker. Below deck, the interior (designed by Emanuele Pillon) offers elegant teak finishes, smart ergonomics, with a 3 cabins and 2 heads layout! The design emphasizes both in performance and comfort, with a flush deck, hidden lines, lots of storage, and excellent sea-keeping.

All in all, our Italia Yachts 13.98 is a refined, performance-oriented cruiser that's easy to handle even with a small crew—while still offering very comfortable accommodations for serious cruising, immediately available for her new owner with BRAND NEW "John Mast" aluminum mast and standing rigging!

Contact us for more information!

ITALIA YACHTS 13.98

BUILDER:	Italia Yachts
YEAR:	2013
L.O.A:	13.98m
BEAM:	4.30m
DRAFT:	2.60m
ENGINE:	Yanmar 55hp
ENGINE HOURS:	2.800 hours

ASKING PRICE
€295.000 VAT paid

SPECIFICATIONS

CONSTRUCTION:	Fibreglass
WATER CAPACITY:	440 L
FUEL CAPACITY:	240 L
CRUISING SPEED:	7 kn
DISPLACEMENT:	9.500 kg
FLAG:	Austria
LOCATION:	Koilada, Greece

ACCOMMODATION

CABINS:	3 Guests 6
HEADS:	2

George Siaravas

Yacht Broker

george@atalantamarine.com

+30 6936 85 3100

ELECTRICAL EQUIPMENT

- Shore Power Inlet
- 4 piece LiFePo 100 ah 12V (2023)
- Battery Charger
- Solar Panel: 4 flex Pannels on the Bimini

ELECTRONICS

Fully updated Navigational Equipment by **Raymarine (2023)** including

- Wind Speed / Direction
- Log-Speedometer (Repeaters: 4)
- GPS Plotter (2)
- Radar
- Autopilot
- VHF
- NAVTEC Furuno
- Radio /Mp3 Player

INSIDE EQUIPMENT

- Marine Electric Head
- Electric Bilge Pump
- Hot Water - Boiler
- Salt water manual pump
- Manual Bilge Pump
- Oven
- Refrigerator

OUTSIDE EQUIPMENT

- Cockpit Cushions
- Cockpit Shower
- Cockpit Table special for magnetic glasses, plywood with overlay (removable)
- Sprayhood
- Foldable bath platform with intergrated swimming ladder
- Teak Cockpit and Sidedecks

RIGGING

- New Aluminum mast "John Mast"
- New Rod Rigging
- New Running Rigging
- Underdeck jib furler
- Spinnaker pole
- Ronstan mainsail car-battens
- Electric Winch: Antal XT 48
- Navtec Hydraulic back-stay

SAILS

- Battened **Mainsail** Cruising Membran Grey 2025 (3rd Reef for Trysail)
- Furling **Genoa** Cruising Membran Grey (2025)
- **Code 0** Folia Sail with Furling

Gennakers

- 162m² (2024)
- 148m² (2023) with Gennacker Sock
- **Spinnaker** 184m²
- **Storm Jib Mylar** with seperate Stay (2023)



Deiiopea
VIENNA























LUCE NAV. MOTORE
STEERING LIGHT

FONDA
OR LIGHT

LUCE PONTE
DECK LIGHT

BOMA
M LIGHT

LUCI DI CORTESIA
COURTESY LIGHT

ANCHES / SALPA
ANCHES / WINDLASS

SFARBEN

TALIA YACHTS



Raymarine



STBY

-1°

+1°

Menu

-10°

+10°

Auto



Raymarine

OK
Menu
DSC

HI/LO

+

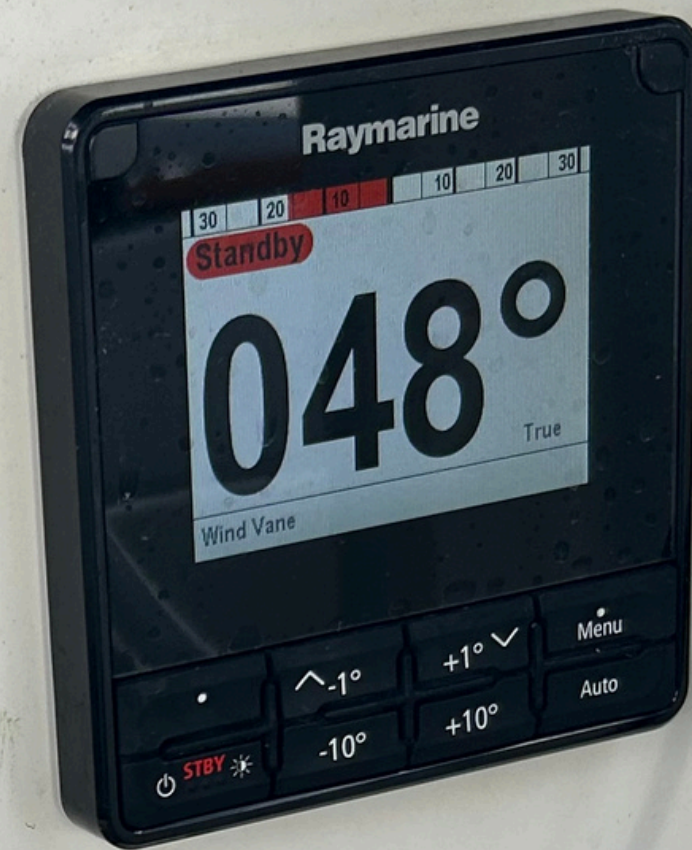
< >

VOL
SOU

↓

16/+

-




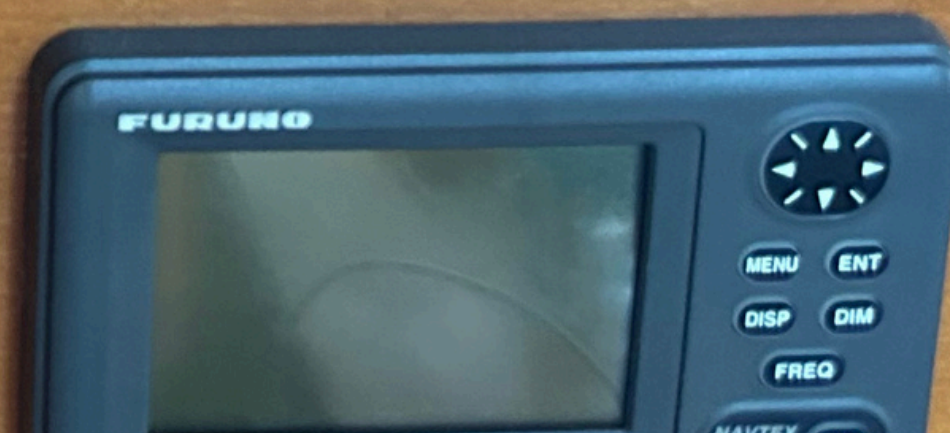
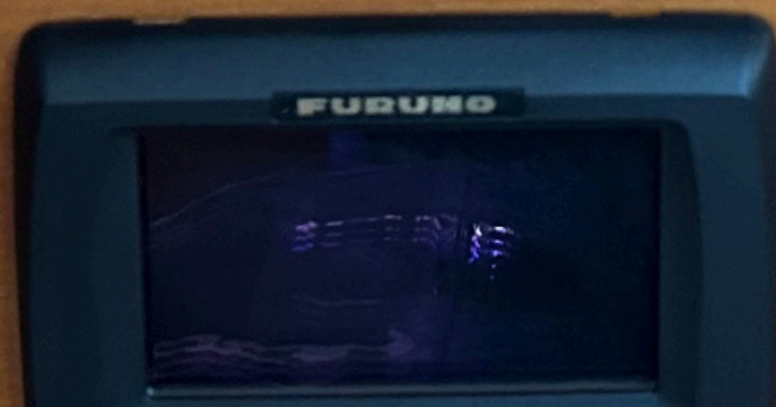
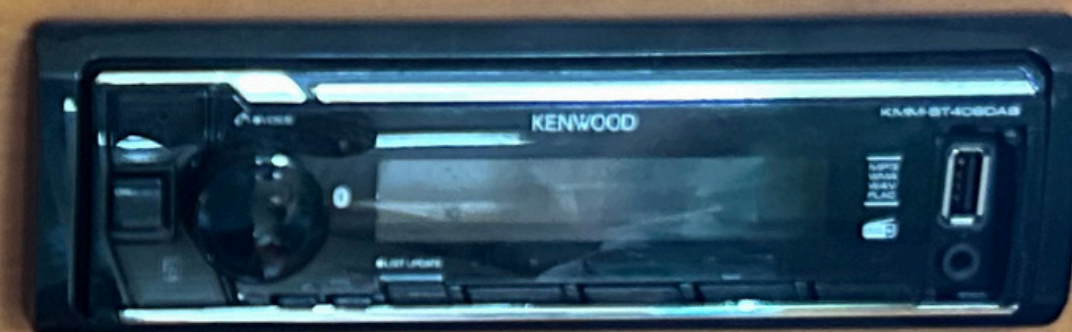






STRUMENTI
INSTRUMENTS
 VHF - AIS
COMMUNICATION
 KUEHLSCHRANK
 GPS - RADAR
GPS - RADAR
 MULTIMEDIA
MULTIMEDIA
 DISPONIBILE
SPARE
 POMPA DI SENTINA
BILGE PUMP
 MANUALE
MANUAL
 AUTOMATICA
AUTO
 GESTIONE 220V
220V PANEL
 BOILER
WATER HEATER
 AIR CON
AIR CON

ITALIA  YACHTS



Raymarine

37°24.494' N 023°07.705' E MOB 09:54

Skipper

Chart Dashboard Chart/Dashboard Chart Combo

Chart/Radar Radar Chart/Fishfinder Chart/Radar/Fishfinder

My data Apps Alarms Settings

The image shows a Raymarine electronic display screen mounted on a boat's dashboard. The screen displays a menu of navigation and monitoring options. At the top, it shows the current coordinates (37°24.494' N 023°07.705' E), a MOB (Man Overboard) icon, and the time (09:54). Below this, there's a 'Skipper' label and a warning icon. The main menu consists of several large, colorful buttons: 'Chart' (blue with a boat icon), 'Dashboard' (blue with a gauge icon), 'Chart/Dashboard' (blue with a boat and gauge icon), 'Chart Combo' (blue with two boat icons), 'Chart/Radar' (blue with a boat and radar icon), 'Radar' (green with a radar icon), 'Chart/Fishfinder' (blue with a boat and fish icon), and 'Chart/Radar/Fishfinder' (blue with a boat, radar, and fish icon). At the bottom, there are icons for 'My data', 'Apps', 'Alarms', and 'Settings'. The background of the screen shows a view from the boat's cockpit, including the steering wheel and the sea.





