



FONTAINE PAJOT ASTREA 42

BUILDER: Fountaine Pajot
YEAR: 2024
L.O.A: 12.58m
DRAFT: 1.25m
BEAM: 07.20m
ENGINES: 2 X 50HP Volvo D2
ENGINES HOURS: 294.3 h & 293.5 h
DISPLACEMENT: 12.7T
GENERATOR: 12.2KW Cummins ONAN
GENERATOR HOURS: 92.3 h

Alexia Ertsou
Yacht Broker
alexia@atalantamarine.com
+30 6936 72 8809

ASKING PRICE
€550.000 VAT not paid

SPECIFICATIONS

CONSTRUCTION: Fiberglass
WATER CAPACITY: 700L
FUEL CAPACITY: 470L
SAIL AREA: 70 m²
GENOA: 41 m²
LOCATION: Messolonghi, Greece

ACCOMMODATION

TOTAL CABINS: 3 | Guests 6

- 1 x Owner's suite en suite
- 2 x Double cabins en suite

EXTERIOR EQUIPMENT

- Bimini for helm station
- Outdoor cushions
- 2 bow seats
- Natural wood floor transoms / cockpit
- Additional mooring cleats
- Gas plancha

INTERIOR EQUIPMENT

- Saloon curtains
- Synthetic teak floor maestro shower
- Handrail in staircase

ELECTRONIC TV AND HIFI

- Second VHF AIS helmstation
- GARMIN 3 Smart Cruising : Autopilot, VHF, AIS, 2*GPS 712/7410, 2* multi
- Radar + supoort + wiring
- TV/radio antenna

HOUSEHOLD APPLIANCES AND COMFORT

- 12V 90L Freezer
- Cockpit fridge
- Gas oven
- One fresh water electric head
- Washer / Dryer 5kg 220V
- 12V Fan
- Air cond. 50/60HZ main syst.56K BTU Maestro

ELECTRICITY AND LIGHTING

- Cockpit courtesy lighting
- Additional electric freshwater pump
- Additional AGM battery 150A
- Solar panels 4X90/100 W
- Watermaker 180L/h 50HZ
- Genset 9KW 220V 59HZ

NAVIGATION

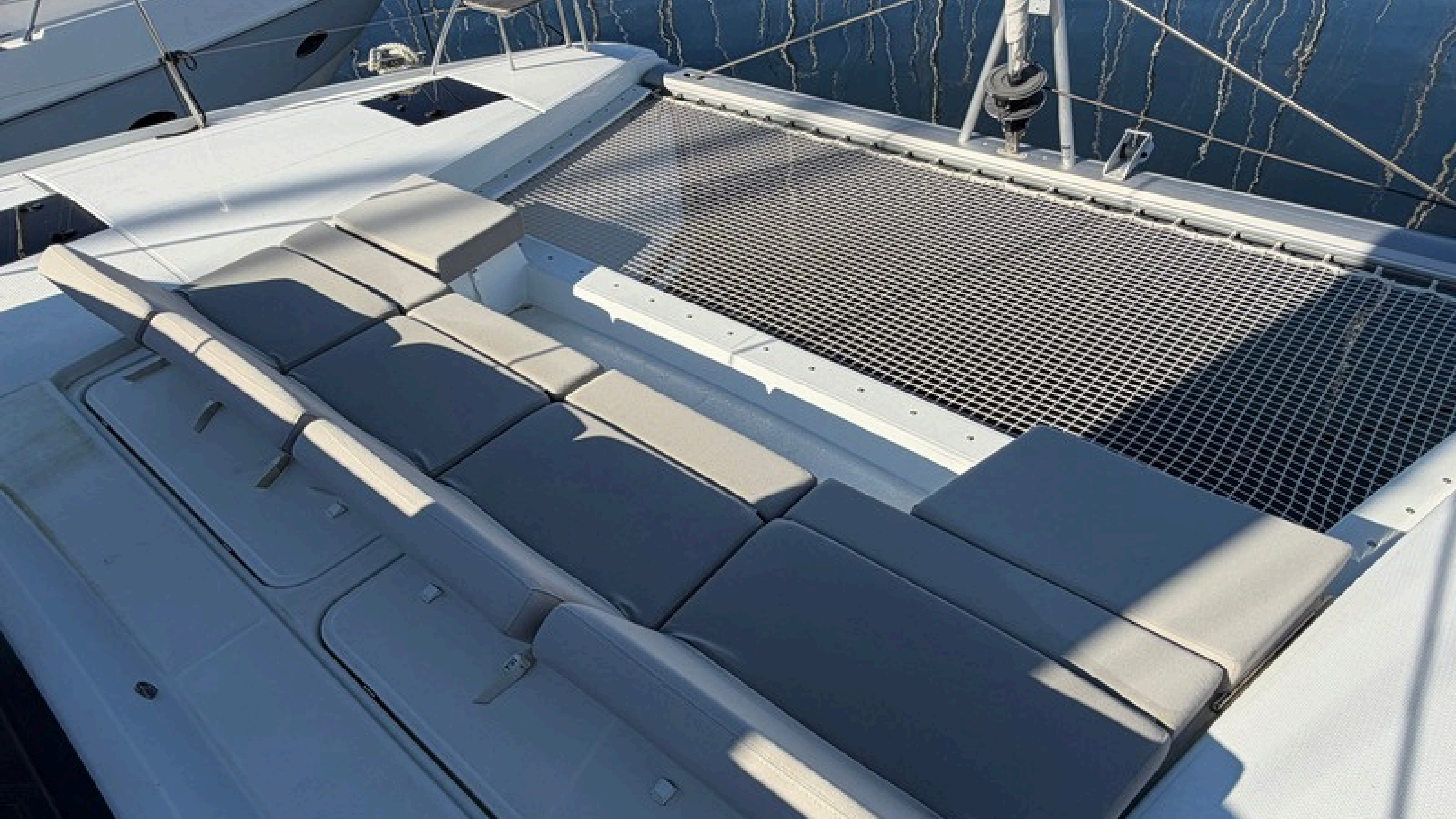
- PROFURL genoa furler
- Automatic mainsail HOOK
- Add. windlass control chain counter
- Electric platform (max. load 150kg)
- Antifouling, epoxy primer
- 1 Electric winch for genoa sheet





Astrée 42

















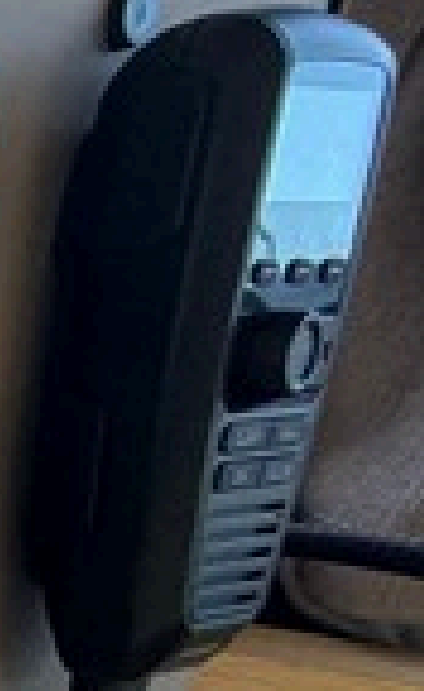


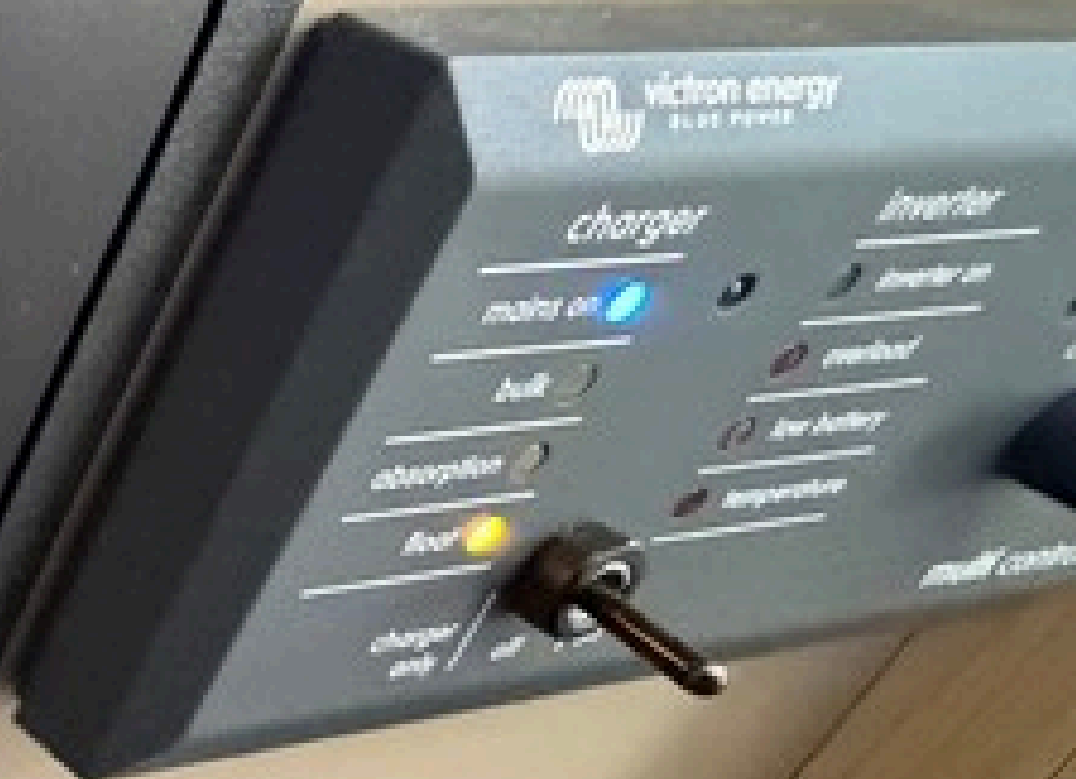












AQUA-BASE®

SALINITY



START



STOP



FLUSHING



www.aquabase.net



charger

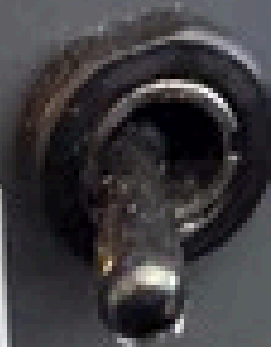
mains on 

bulk 

absorption 

float 

charger
only



on

inverter

 inverter on

 overload

 low battery

 temperature



current limit



multi control















