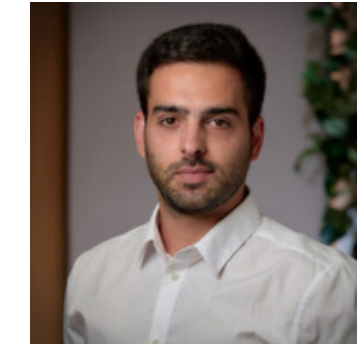




SISTERSHIP

# AZIMUT 68

**BUILDER:** Azimut  
**YEAR:** 2005  
**REFIT:** 2025  
**L.O.A:** 21.00m  
**DRAFT:** 1.70m  
**BEAM:** 5.45m  
**ENGINES:** 2 x 1150HP MTU  
**MODEL:** 12V 183TE93  
**ENGINE HOURS:** 1.800  
**FUEL:** Diesel



Nikolas Daoutis  
Yacht Broker  
[nikos@atalantamarine.com](mailto:nikos@atalantamarine.com)  
+30 6983 91 5847



Dimitris Deligiannis  
Yacht Broker  
[ddeligiannis@atalantamarine.com](mailto:ddeligiannis@atalantamarine.com)  
+30 6932 66 4000

**ASKING PRICE**  
**€650.000 ex VAT**

## KEY FEATURERS

- Major refit 2025:
  1. New upholstery in all decks.
  2. New teak deck.
- Pristine Condition.
- Only privately used.
- "Ready to go" for the season.

## SPECIFICATIONS

**CONSTRUCTION:** Fiberglass  
**WATER CAPACITY:** 1200 L  
**FUEL CAPACITY:** 4.800 L  
**CRUISING SPEED:** 28 kn  
**MAXIMUM SPEED:** 32 kn  
**LOCATION:** Greece

## ACCOMMODATION

**TOTAL CABINS:** 4 | Guests 8  
1 x Master Cabin en-suite  
1 x VIP Cabin en-suite  
1 x Twin Cabin en-suite  
1 x Bunk Cabin en-suite  
**CREW CABINS:** 1 | Crew members 2



## MACHINERY

- Generator: 2 x Kohler 17.5 kW - 6.000 hours
- Converter: 12V/24V
- Electricity : 12V, 24V, 230V
- Battery Charger
- Air-conditioning
- Black Water Tank
- Bow Thruster: Side Power
- Stern Thruster: Side Power
- Fresh Water Pump
- Hot Water System
- Water Maker 260 L/h
- Transmission: ZF
- Inverter

## NAVIGATIONAL EQUIPMENT

- Autopilot: 2 x Raymarine
- Compass: 2 x Magnetic
- Depthsounder: 2 x Raymarine
- GPS Chart Plotter: 3 x Raymarine
- Radar: Raymarine
- Electric Searchlight
- CCTV
- Chain Counter

## GALLEY EQUIPMENT

- Barbeque
- Ceramic Plates
- Exhaust Fan
- Microwave – Grill – Oven
- Refrigerator(s)
- Freezer(s)
- Deep Freeze
- Washing Machine(s)
- Coffee Machine
- Crockery, Cuttlery, Glasses

## OTHER EQUIPMENT

### TENDER

- Novurania DL 360 with Yamaha 60HP

### DECK EQUIPMENT

- Anchor Chain
- Anchor(s)
- Bimini
- Cover
- Crane(s)
- Gangway
- Shower
- Side Door(s)
- Swimming Ladder
- Winch(es)
- Windlass(es)
- Underwater Lights

### SAFETY EQUIPMENT

- Automatic Fire Fighting
- CO2 System
- Fire Alarm
- Flares & Fireworks
- First Aid Kit
- Lifejackets















Raymarine

Raymarine

**WARNING**  
This product is intended for use on boats. It is not intended for use on land. It is not intended for use in areas where it may be exposed to fire or high temperatures. It is not intended for use in areas where it may be exposed to salt water or other corrosive substances. It is not intended for use in areas where it may be exposed to vibration or shock. It is not intended for use in areas where it may be exposed to electromagnetic interference. It is not intended for use in areas where it may be exposed to lightning strikes. It is not intended for use in areas where it may be exposed to other hazards. It is not intended for use in areas where it may be exposed to other hazards.

start stop reverse stop start

Raymarine

SEARCHLIGHT

AZIMUT  
AZIMUT











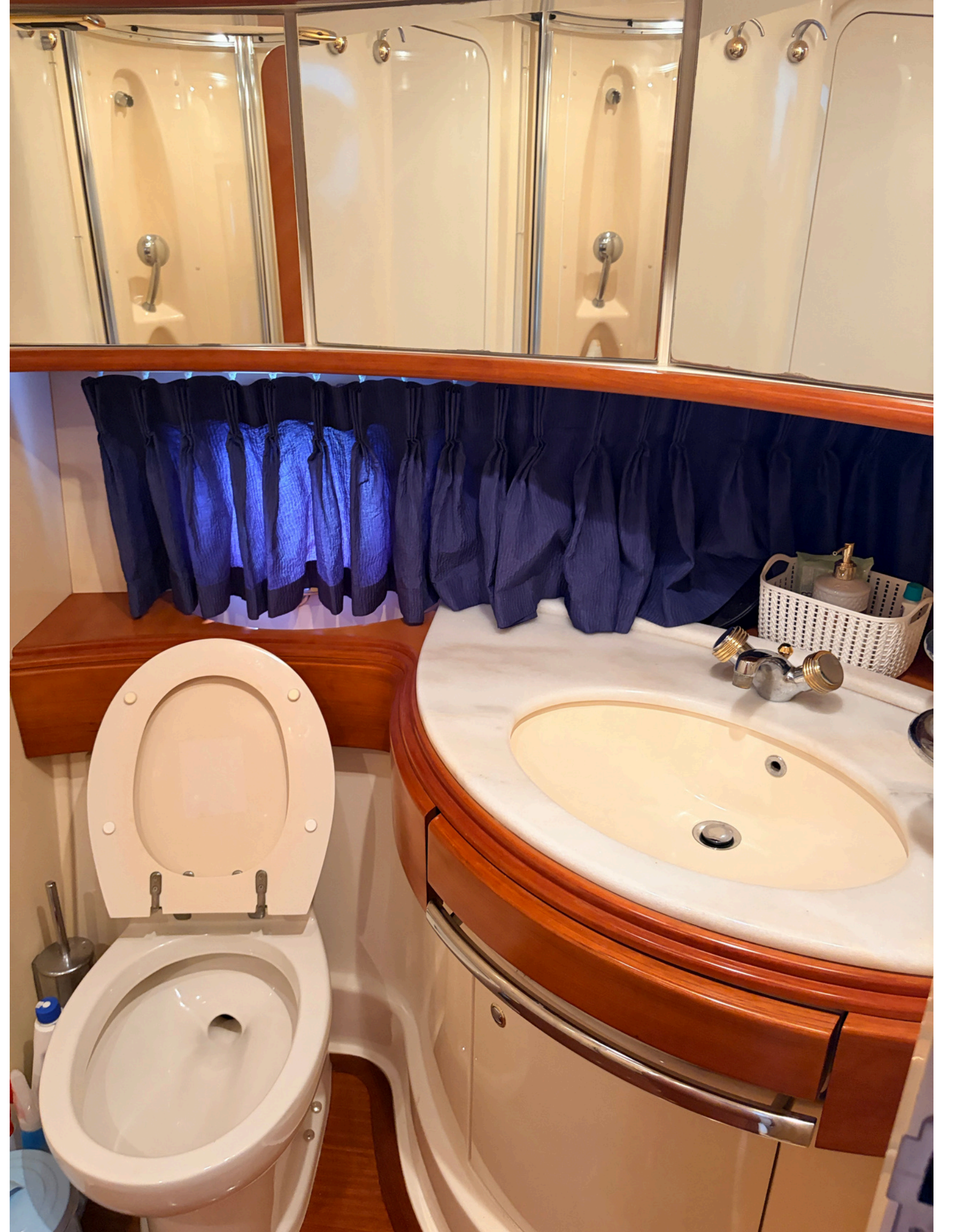




















mtu  
Diesel

mtu  
Cummins

